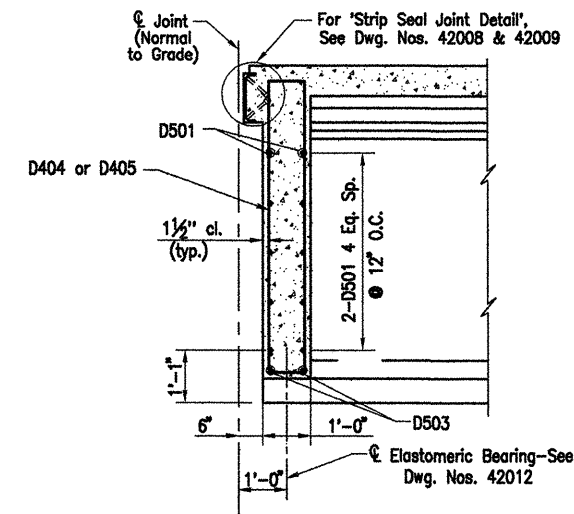


COMPANY\1999 JOBS\99-044 AHTD\WHITERIVER\JOB 110394\363crossec2alt1



SECTION A-A
Scale: 1/2" = 1'-0"

For 'Finger Joint Detail',
See Dwg. Nos. 42010 to 42011

⌀ Joint
(Vertical)

D404 or D405

1 1/2" cl.
(typ.)

D501

2-D501 4 Eq. Sp.
@ 12" O.C.

1'-1"

1'-2"

1'-0"

D503

1'-8"

⌀ Elastomeric Bearing-See
Dwg. Nos. 42012

SECTION B-B
Scale: 1/2" = 1'-0"

ALTERNATE NO. 1
WHITE RIVER BRIDGE APPROACHES
DETAILS OF 363'-0" CONT.
PRESTRESSED CONCRETE GIRDER UNIT
(SHEET 3 OF 7)

WHITE RIVER STR. & APPRS.
(CLARENDON) (PH. II) (F)
MONROE COUNTY

ROUTE 79 SEC. 13
ARIZONA STATE HIGHWAY COMMISSION
TULSA, ARIZ.

Engstrom/Modjeski and Masters, Inc.

DRAWN BY: YO DATE: Nov. 07 FILENAME: b11039411_s03
 CHECKED BY: GPT DATE: Nov. 01 SCALE: 1/2" = 1'-0"
 DESIGNED BY: YO DATE: Nov. 01
 BRIDGE NO. 06830 DRAWING NO. 41996